

Psychological Medicine

<http://journals.cambridge.org/PSM>

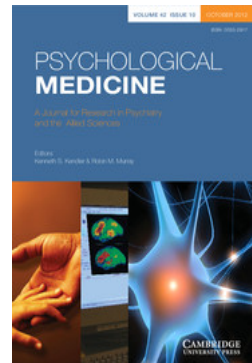
Additional services for **Psychological Medicine**:

Email alerts: [Click here](#)

Subscriptions: [Click here](#)

Commercial reprints: [Click here](#)

Terms of use : [Click here](#)



Cannabis affects people differently: inter-subject variation in the psychotogenic effects of Δ^9 -tetrahydrocannabinol: a functional magnetic resonance imaging study with healthy volunteers

Z. Atakan, S. Bhattacharyya, P. Allen, R. Martín-Santos, J. A. Crippa, S. J. Borgwardt, P. Fusar-Poli, M. Seal, H. Sallis, D. Stahl, A. W. Zuardi, K. Rubia and P. McGuire

Psychological Medicine / *FirstView* Article / January 2006, pp 1 - 13

DOI: 10.1017/S0033291712001924, Published online:

Link to this article: http://journals.cambridge.org/abstract_S0033291712001924

How to cite this article:

Z. Atakan, S. Bhattacharyya, P. Allen, R. Martín-Santos, J. A. Crippa, S. J. Borgwardt, P. Fusar-Poli, M. Seal, H. Sallis, D. Stahl, A. W. Zuardi, K. Rubia and P. McGuire Cannabis affects people differently: inter-subject variation in the psychotogenic effects of Δ^9 -tetrahydrocannabinol: a functional magnetic resonance imaging study with healthy volunteers. *Psychological Medicine*, Available on CJO doi:10.1017/S0033291712001924

Request Permissions : [Click here](#)

Cannabis affects people differently: inter-subject variation in the psychotogenic effects of Δ^9 -tetrahydrocannabinol: a functional magnetic resonance imaging study with healthy volunteers

Z. Atakan^{1*}, S. Bhattacharyya¹, P. Allen¹, R. Martín-Santos², J. A. Crippa³, S. J. Borgwardt⁴, P. Fusar-Poli¹, M. Seal⁵, H. Sallis⁶, D. Stahl⁶, A. W. Zuardi³, K. Rubia⁷ and P. McGuire¹

¹ Section of Neuroimaging, Department of Psychosis Studies, Institute of Psychiatry, King's College London, London, UK

² Institut Municipal Investigació Mèdica IMIM Hospital del Mar, Barcelona, Spain

³ Departamento de Neuropsiquiatria e Psicologia Médica, Faculdade de Medicina de Ribeirão Preto, Universidade de São Paulo, Brazil

⁴ Psychiatric Outpatient Department, University Hospital Basel, Basel, Switzerland

⁵ Murdoch Children's Research Institute, The Royal Children's Hospital, Parkville, Australia

⁶ Department of Biostatistics, Institute of Psychiatry, King's College London, London, UK

⁷ Section of Developmental Neuropsychology and Neuroimaging, Institute of Psychiatry, King's College London, London, UK

Background. Cannabis can induce transient psychotic symptoms, but not all users experience these adverse effects. We compared the neural response to Δ^9 -tetrahydrocannabinol (THC) in healthy volunteers in whom the drug did or did not induce acute psychotic symptoms.

Method. In a double-blind, placebo-controlled, pseudorandomized design, 21 healthy men with minimal experience of cannabis were given either 10 mg THC or placebo, orally. Behavioural and functional magnetic resonance imaging measures were then recorded whilst they performed a go/no-go task.

Results. The sample was subdivided on the basis of the Positive and Negative Syndrome Scale positive score following administration of THC into transiently psychotic (TP; $n=11$) and non-psychotic (NP; $n=10$) groups. During the THC condition, TP subjects made more frequent inhibition errors than the NP group and showed differential activation relative to the NP group in the left parahippocampal gyrus, the left and right middle temporal gyri and in the right cerebellum. In these regions, THC had opposite effects on activation relative to placebo in the two groups. The TP group also showed less activation than the NP group in the right middle temporal gyrus and cerebellum, independent of the effects of THC.

Conclusions. In this first demonstration of inter-subject variability in sensitivity to the psychotogenic effects of THC, we found that the presence of acute psychotic symptoms was associated with a differential effect of THC on activation in the ventral and medial temporal cortex and cerebellum, suggesting that these regions mediate the effects of the drug on psychotic symptoms.

Received 17 February 2012; Revised 20 July 2012; Accepted 20 July 2012

Key words: Cerebellum, fMRI, middle temporal gyri, parahippocampus, response inhibition, THC.

Introduction

Epidemiological research points towards a link between the use of cannabis and the increased risk of developing a psychotic illness, in a dose-dependent manner (Arseneault *et al.* 2002; Zammit *et al.* 2002; Moore *et al.* 2007). However, cannabis affects individuals differently and not everyone who uses it develops psychosis. The basis of this variable

sensitivity is unclear, as is the location where Δ^9 -tetrahydrocannabinol (THC), the main compound of the plant, mediates its psychotogenic effects. Individuals with a predisposition to psychosis who might be particularly vulnerable to its adverse effects were indicated by a positive family history of psychosis (McGuire *et al.* 1995), a schizotypal personality (Stirling *et al.* 2008), the presence of subclinical psychotic features (Henquet *et al.* 2004), being at ultra-high risk for psychosis (Peters *et al.* 2009) or carrying specific genes (Caspi *et al.* 2005; van Winkel *et al.* 2011; Bhattacharyya *et al.* 2012a).

Elucidating which behavioural and biological factors confer greater risk for psychosis in cannabis users

* Address for correspondence: Z. Atakan, M.D., Department of Psychosis Studies, PO67, Section of Neuroimaging, Institute of Psychiatry, King's College London, DeCrespigny Park, London, SE5 8AF, UK.

(Email: Zerrin.Atakan@kcl.ac.uk)

is crucial, because as the availability of plants with higher THC content has increased, so have the related health risks (Degenhardt *et al.* 2010; Cascini *et al.* 2011). Although relatively few individuals develop a full-blown psychotic illness after cannabis use, a larger number (between 15 and 51%) experience transient psychotic symptoms lasting from a few hours to a few days, as a result of cannabis use (Thomas, 1996; Green *et al.* 2003; D'Souza *et al.* 2004, 2009; Morrison *et al.* 2009). It is not yet known if there is a continuum of risk between those who become transiently psychotic (TP) and those who develop an enduring psychotic illness in relation to cannabis use. However, it would be both logical and ethically feasible to study the effects of THC in healthy individuals by comparing those who experience transient psychotic symptoms due to cannabis intoxication with those who do not. Findings may inform research on the mechanisms underlying psychotic symptoms *per se*, as well as examining behavioural and neurobiological mechanisms that increase the potential risk to an individual.

Although there are a growing number of neuroimaging studies that have examined the acute effects of THC administration on brain function (Martín-Santos *et al.* 2010), including those from our group (Borgwardt *et al.* 2008; Fusar-Poli *et al.* 2009; Bhattacharyya *et al.* 2009, 2010; Winton-Brown *et al.* 2011), to date none of these studies has examined the effects of THC according to psychotic symptom outcome.

Response inhibition, the ability to suppress irrelevant acts, is a function that is impaired in cannabis users, since they make more inhibitory errors (Hester *et al.* 2009; Ramaekers *et al.* 2009; Battisti *et al.* 2010a). It is also relevant to patients with schizophrenia who are reported to perform slowly in various response inhibition tasks (Enticott *et al.* 2008; Huddy *et al.* 2009) and have poor error awareness (Turken *et al.* 2003). Furthermore, this group shows abnormal frontostriatal activation during inhibition tasks (Rubia *et al.* 2001a). A well-established response inhibition paradigm used in imaging studies is the go/no-go task, which involves the activation of the inferior frontal cortex (IFC), dorsolateral prefrontal cortex (DLPFC), inferior parietal cortices and anterior cingulate gyrus (ACG) (Rubia *et al.* 2001b; Simmonds *et al.* 2008).

The neuroimaging findings regarding the effect of cannabis on response inhibition are inconclusive due to methodological variations. Two studies report significantly lower activation in regular cannabis users, relative to non-users, within the ACG and diffuse bilateral activity in the DLPFC (Gruber & Yurgelun-Todd, 2005; Hester *et al.* 2009). Another study reports increased response in the right DLPFC, bilateral medial frontal, inferior and superior parietal lobules in cannabis users even after 28 days of monitored

abstinence (Tapert *et al.* 2007). In our previous study on response inhibition in participants who had seldom used cannabis, but were challenged with oral THC relative to placebo, THC was shown to attenuate activation in the right IFC and ACG and precuneus bilaterally (Borgwardt *et al.* 2008).

In the present study, we supplemented our previous sample by recruiting additional participants, using exactly the same criteria and methodology, to investigate brain activation in those who experienced transient psychotic symptoms after THC administration, compared with those who did not. The administration of cannabidiol, in addition to THC and placebo, is not included in this paper, as it is not relevant to the investigation in question. We hypothesized that participants who developed transient psychotic symptoms with THC would show differential activation relative to those that did not experience psychotic symptoms in brain regions that have previously been implicated in the pathophysiology of psychosis, such as the prefrontal, medial temporal and ventral temporal cortex.

Method

Design

This was a double-blind, placebo-controlled within-subject study, with a 1-month interval between scans. The order of drug administration was pseudo-randomized so that equal numbers followed each drug sequence. The Joint South London and Maudsley National Health Service and Institute of Psychiatry Research Ethics Committee approved the protocol. Each subject provided informed consent and was given extensive written and verbal information about the effects of cannabis, including psychotic symptoms.

Participants

All 21 participants were healthy, native English-speaking, right-handed males. The majority (90.5%) were white British. Their ages ranged from 20 to 42 years. All of them had used cannabis on no more than 25 occasions in their lifetime and none had used cannabis in the previous 3 months.

Criterion for inclusion into the TP group was made *post hoc*, on the basis of those who scored 3 or more on at least three items of the Positive and Negative Syndrome Scale (PANSS) positive subscale (Kay *et al.* 1987) at 2-h measurements. D'Souza *et al.* (2004), in their THC challenge study, had used the same criterion previously. Participants who scored below these thresholds were classed as 'non-psychotic' (NP). We identified 11 who met the criteria for transient

psychosis. All completed the scanning procedure, except for one who became too anxious to stay in the scanner. Therefore, the behavioural and symptomatic data are based on 11 TP participants and the imaging data on 10.

Participants were carefully screened and the details of the procedures can be found in the supplementary material. They were asked to abstain from any illicit drug use during the study period, from alcohol and coffee 24 and 12 h before, respectively, and cigarettes on the morning of each session, as well as receiving a urine drug screening prior to scans.

Procedure

Participants were examined at the start of each session and their pulse and blood pressure were monitored. They were given identical-looking red gelatine capsules of either 10 mg of THC (99.6% pure; THC-Pharm, Germany) or placebo (flour). Both participants and researchers were blind to the content of the capsules. The dose of THC was selected on the basis of previous research (Chesher *et al.* 1990; Curran *et al.* 2002; Gray *et al.* 2008) to produce an effect on regional brain activation without prominent intoxication. Even though oral administration is known to indicate an erratic absorption and inter-subject variability (Grotenhermen, 2003), it was the preferred method in this study in order to produce a slow peaking plasma level for the duration of the imaging session (Lemberger *et al.* 1971; Ohlsson *et al.* 1980).

Behavioural ratings

The behavioural effects were evaluated at baseline (before drug administration), +1 h (immediately before scanning), +2 h (immediately after scanning) and at +3 h time points by using the Visual Analogue Mood Scale (VAMS), State-Trait Anxiety Inventory (STAI), Addiction Research Centre Inventory (ARCI), Analogue Intoxication Scale (AIS), Cambridge Depersonalization Scale and PANSS. Further information on these scales is available in the supplementary material.

As the focus of this paper is to explore the differences between those who become TP under THC and those who do not, we mainly evaluated the baseline and 2-h measurements, when the peak intoxication is experienced following oral administration. The 3-h measurements are also presented in the graphs.

Researchers stayed with the participants until all their symptoms disappeared. In all cases symptoms had resolved spontaneously within 2–3 h. No psychopathological symptoms were reported in follow-up checks the next day, and at 1 week and 1 month later.

Functional MRI paradigm – go/no-go

Participants practised the go/no-go task prior to scanning to ensure familiarity. The task involves motor response inhibition and selective attention. Subjects are required to either execute or inhibit a motor response according to the visual cues presented on a screen. The task is described in detail in the supplementary material.

Behavioural analyses

Data were recorded on SPSS version 20.0 (SPSS, Inc., USA) and analysed using Stata 11 (StataCorp LP, USA). Descriptive statistics were used to summarize the baseline variables. Age, years of education, and cannabis, cigarette, alcohol and other drug use were compared between the two groups using *t* tests (or equivalent non-parametric Mann–Whitney *U* tests or Fisher's exact test). A multilevel model was used to assess the effect of THC on each outcome measure, with subject included as a random effect and time as a fixed effect. A second multilevel model assessed the difference between the TP and NP groups. The distribution of each measure was assessed and no gross violations of normality were found, thus making transformations of the data unnecessary. Non-parametric methods are not advisable in this situation as they are unable to handle missing data. The multilevel models used in our analysis are less restrictive regarding missingness assumptions.

When investigating task performance, two further multilevel models were run. The first included the main effect of drug only, while group effect and its interaction with drug were also added in the second.

Image acquisition

Images were acquired on a 1.5-T Signa (GE, USA) system at the Maudsley Hospital, London. T2*-weighted images were acquired with a repetition time (TR) of 1.8 s, echo time (TE) of 40 ms, flip angle 90° in 16 planes (7 mm thick), parallel to the anterior commissure–posterior commissure line. To facilitate anatomic localization of activation, a high-resolution inversion recovery image dataset was also acquired, with 3-mm contiguous slices and an in-plane resolution of 3 mm (TR 16000 ms, inversion time 180 ms, TE 80 ms).

Data processing and analysis

A complete description of image analysis including pre-processing and non-parametric statistical modelling can be found in the supplementary material. A non-parametric approach (XBAM v4; <http://www.>

brainmap.co.uk) was used to analyse the imaging data, as this method does not assume that the population distribution is Gaussian. It is difficult to test this assumption with neuroimaging data in small groups, and, when tested, is often found to be violated (Rabe-Hesketh *et al.* 1997; Thirion *et al.* 2007). Instead, this approach uses median statistics to control outlier effects and employs permutation rather than normal theory-based inference as recommended by Hayasaka & Nichols (2003). The test statistic is computed by standardizing for individual difference in residual noise before embarking on second-level, multi-subject testing, using robust permutation-based methods, employing a mixed-effects method. The group activation maps for each task condition were computed for THC and placebo by determining the median sum of squares ratio at each voxel and then compared using non-parametric repeated-measures analysis of co-variance, with a voxelwise threshold of $p=0.05$. The clusterwise threshold was set such that the total number of false-positive clusters per brain volume was <1 per map and the p value at which this occurred is reported.

Results

Of the 12 participants receiving THC in the first session and placebo in the second, six were classified as being in the TP group. The order of drug administration was reversed in the remaining nine participants, of whom five were subsequently included in the TP group. There was no evidence of an order effect, and no significant group differences with respect to age or years of education (all $p > 0.1$). Out of 21, 13 did not smoke. A total of eight participants were current tobacco smokers, but only two smoked more than 10 cigarettes per day and both of these were in the NP group. Fisher's exact test showed no significant difference between the two groups in terms of cigarette smoking, cannabis, alcohol and other drug use (all $p > 1.00$) (Table 1).

Symptom data

In all participants, a significant change in the level of the following outcome measures was observed 2 h after the administration of THC: STAI ($p < 0.001$), ARCI ($p < 0.001$), VAMS tranquillization subscale ($p = 0.007$), AIS ($p < 0.001$) and each of the PANSS subscales ($p \leq 0.001$) (Fig. 1). For each of these measures an increase in score was observed, with the exception of VAMS tranquillization, which was lower at 2 h. The differences observed between baseline and 2 h were only significant when participants received THC, rather than placebo.

There was no significant difference between the TP and NP groups on any symptom measure at baseline or after placebo administration. However, 2 h after the administration of THC, there was a significant difference between the groups for VAMS tranquillization ($p = 0.031$), PANSS negative ($p = 0.020$) PANSS positive, general and total subscales (all $p \leq 0.001$); no significant difference was found for the other behavioural scales (Table 2, Fig. 2).

Physiological measures

Under the THC condition, there was no evidence of a difference in heart rates between the two groups either at baseline or 2 h after drug administration. However, when looking at the effect of the drug across all participants, heart rate was significantly increased at 2 h after administration of either THC ($p \leq 0.001$) or placebo ($p = 0.002$). There were no significant differences between either systolic or diastolic blood pressure in the two groups either at baseline or 2 h after administering THC. Graphs of physiological measures are provided in the supplementary material.

Task performance

There was a non-significant trend suggesting that THC increased inhibition errors among all participants ($p = 0.066$). A significant interaction was found between group and drug condition ($p = 0.002$). Inhibition errors were significantly higher in the TP group than in the NP group ($p < 0.001$), but only when participants received THC. No significant differences were found for mean reaction time to 'go' trials between the THC and placebo conditions. A table on task performance is provided in the supplementary material.

Neuroimaging results

Task effect

Under the placebo condition, no-go relative to oddball trials were associated with activation in the right ACG, prefrontal cortex and right middle temporal gyrus (MTG) independent of group, but with a less conservative significance threshold contrast ($p < 0.025$; uncorrected for <1 false-positive cluster).

Main effect of drug

During no-go compared with oddball trials, across all subjects, THC increased activation in the hippocampus, the tail of the caudate nucleus and the insula in the right hemisphere, relative to placebo. There were no areas where THC was associated with reduced activation relative to placebo.

Table 1. Participants' sociodemographic and substance-use comparisons^a

	Transiently psychotic (<i>n</i> = 11)	Non-psychotic (<i>n</i> = 10)
THC in first session, <i>n</i>	6	6
Mean age, years (s.d.)	26.76 (5.00)	25.70 (6.27)
Mean education, years (s.d.)	15.33 (3.64)	16.78 (4.15)
Employment, <i>n</i> (%)		
Employed	8 (72.7)	3 (30.0)
Unemployed	0 (0)	1 (10.0)
Student	2 (18.2)	5 (50.0)
No details	1 (9.1)	1 (10.0)
Cannabis use ^b , <i>n</i> (%)		
Experimental	7 (63.6)	5 (50.0)
Occasional	4 (36.4)	5 (50.0)
Cigarette use, <i>n</i> (%)		
Non-smoker	7 (63.6)	6 (60.0)
Smoker	4 (36.4)	4 (40.0)
Alcohol use ^c , <i>n</i> (%)		
Occasional	6 (54.6)	5 (50.0)
Moderate	5 (45.4)	5 (50.0)
Other drugs, <i>n</i> (%)		
Not used	8 (72.7)	7 (70.0)
Used	3 (27.2)	3 (30.0)

THC, Δ^9 -Tetrahydrocannabinol; s.d., standard deviation; df, degrees of freedom.

^a No order effect ($\chi^2 = 0.06$, $df = 1$, $p = 0.80$) and no significant group differences with respect to age (Mann–Whitney *U* test: $Z = -0.78$, $p = 0.44$), years of education ($t = 0.79$, $df = 16$, $p = 0.44$) and with Fisher's exact test: use of cigarette smoking ($p = 1.00$), cannabis ($p = 0.67$), alcohol ($p = 1.00$) and other drug use ($p = 1.00$).

^b Experimental cannabis use = less than 10 times. Occasional use = 10–25 times, in lifetime.

^c Occasional alcohol use = drinking at weekends, social events. Moderate use = drinking at least three times per week.

Main effect of group

During no-go compared with oddball trials, independent of drug, the TP group showed less activation than the NP group in the right MTG ($p < 0.005$; corrected for < 1 false-positive cluster) and the vermis of the cerebellum ($p < 0.005$; corrected for < 1 false-positive cluster). There were no areas where the TP group showed greater activation than the NP group (Fig. 3).

Group \times drug interaction

There was a significant interaction ($p < 0.01$; corrected for < 1 false-positive cluster) between the effects of drug and group in the left parahippocampal gyrus (PHG), MTG, superior temporal gyrus (STG) and in the region spanning the right cerebellum and adjacent fusiform gyrus. In all of these regions, relative to placebo, THC significantly attenuated activation in the TP group, whereas it increased it in the NP group.

Relative to placebo, THC also increased activation in the right MTG in the TP group ($p < 0.01$; corrected for < 1 false-positive cluster), but it attenuated activation in the NP group (Fig. 4).

Discussion

We used functional magnetic resonance imaging to investigate differential response to oral THC in a group of healthy, seldom cannabis users and compared the behavioural and imaging findings of those who developed transient psychotic symptoms with those who did not. We found significant differences between the two groups in the effects of THC in the left PHG, STG, MTG and cerebellum, where THC decreased activation in TPs, but increased it in NPs. In the right MTG the reverse happened; THC increased activation in the TPs and decreased it in the NPs. This was accompanied by a higher error rate in the TPs, relative to the NP group, during THC condition. TPs also showed less activation than the NPs in the right

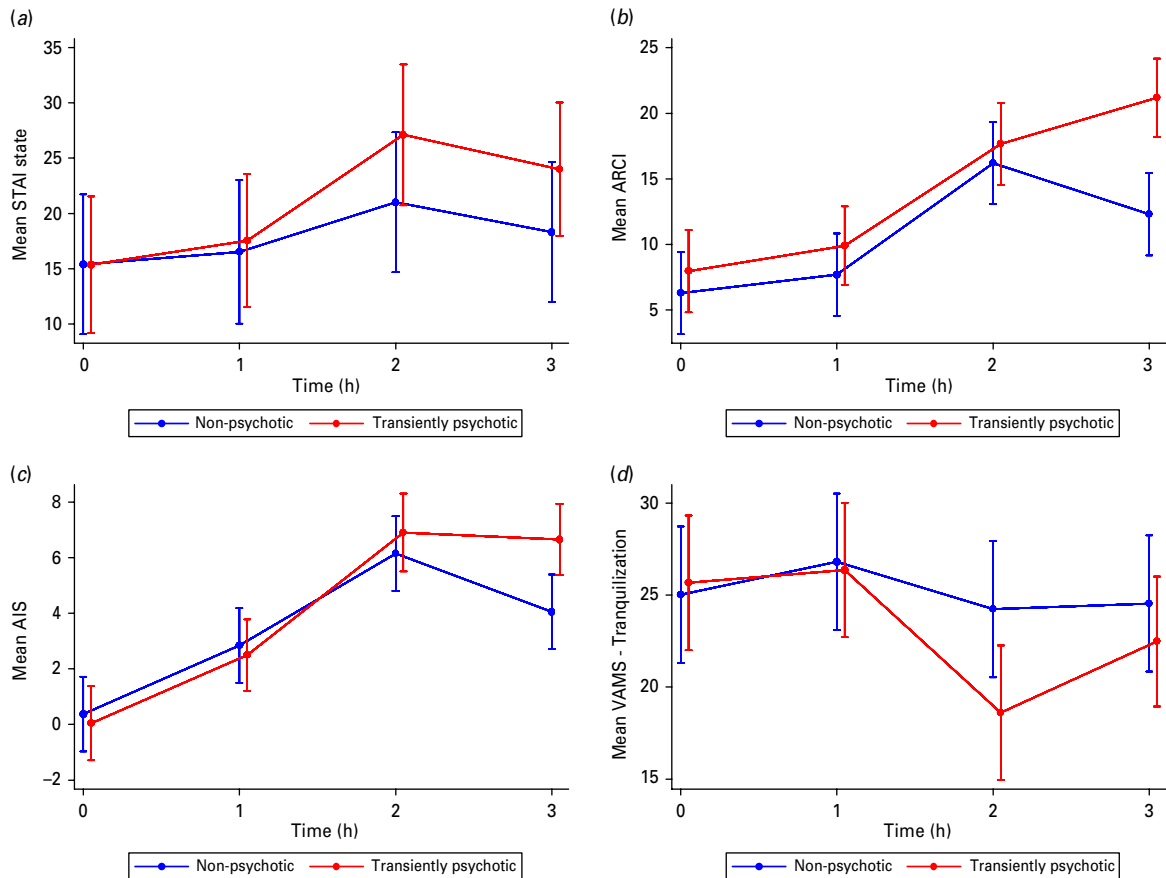


Fig. 1. Comparison of behavioural measures over time, in the Δ^9 -tetrahydrocannabinol (THC) condition: (a) Spielberger's State-Trait Anxiety Inventory; (b) Addiction Research Centre Inventory; (c) Analogue Intoxication Scale; and (d) Visual Analogue Mood Scale (VAMS) tranquillization category. Data are means, with standard errors represented by vertical bars. Measurements were taken just before drug administration at baseline (0) and repeated 1, 2 and 3 h after drug administration. When conditioning on THC, a comparison of transiently psychotic and non-psychotic at 2 h after drug administration showed a significant difference in the VAMS tranquillization category only ($p=0.03$).

MTG and the vermis of the cerebellum, independent of THC.

Symptomatic effects of THC

As the groups were defined in terms of their psychotic experiences following THC, it is not surprising that they differed in their PANSS scores. Due to the small sample size, however, formal corrections for multiple testing were not possible. Instead we lowered the significance level from 5% to 1% at which the PANSS positive, general and total scores remained significant, and the negative subscale showed a trend ($p=0.02$). Therefore the negative scale result needs to be treated with caution. Even though THC significantly affected most measures in all participants, there were remarkably few significant differences in the levels of mood, anxiety and intoxication between the two groups. This may suggest that the differential sensitivity to the effects of THC was particularly and

specifically related to psychotic symptoms. We cannot exclude the possibility that the absence of differences between the two groups in NP symptoms was due to limited statistical power. However, that seems unlikely, as the groups differed significantly not just on psychotic symptom severity, but also in terms of another behavioural measure: response inhibition errors.

In terms of the acute effects of THC, our findings are in line with other challenge studies in which healthy volunteers who received THC, either orally or intravenously, experienced a broad range of transient positive psychotic, negative psychotic and cognitive symptoms (Curran *et al.* 2002; D'Souza *et al.* 2004; Morrison *et al.* 2009). These studies also found that psychotic symptoms were not correlated with anxiety symptoms following THC. Significant increases in pulse rate occurred both in THC and placebo conditions, possibly due to the experimental conditions.

Table 2. Comparison of symptom scales between TP and NP groups at both baseline and 2 h^a

	Time	Placebo			THC		
		Mean difference between TP and NP (95% CI)	Z	p	Mean difference between TP and NP (95% CI)	Z	p
STAI state	Baseline	-1.10 (-8.07 to 5.87)	-0.31	0.76	-0.05 (-8.73 to 8.63)	-0.01	0.99
	2 h	0.31 (-6.71 to 7.33)	0.09	0.93	6.12 (-2.69 to 14.92)	1.36	0.17
ARCI	Baseline	2.83 (-0.94 to 6.60)	1.47	0.14	1.67 (-2.68 to 6.02)	0.75	0.45
	2 h	2.59 (-1.14 to 6.33)	1.36	0.17	1.47 (-2.88 to 5.82)	0.66	0.51
AIS score	Baseline	-0.06 (-1.70 to 1.59)	-0.07	0.94	-0.34 (-2.20 to 1.52)	-0.36	0.72
	2 h	0.24 (-1.34 to 1.83)	0.30	0.76	0.76 (-1.14 to 2.66)	0.78	0.43
VAMS tranquillization	Baseline	-0.96 (-5.48 to 3.56)	-0.42	0.68	0.65 (-4.46 to 5.75)	0.25	0.80
	2 h	-0.43 (-4.88 to 4.02)	-0.19	0.85	-5.62 (-10.73 to -0.52)	-2.16	0.03*
PANSS positive	Baseline	-0.30 (-0.70 to 0.10)	-1.48	0.14	-0.15 (-2.55 to 2.24)	-0.13	0.90
	2 h	0.08 (-0.32 to 0.48)	0.40	0.69	6.94 (4.59-9.28)	5.81	<0.001*
PANSS negative	Baseline	-0.20 (-0.64 to 0.24)	-0.88	0.38	-0.10 (-2.41 to 2.21)	-0.08	0.93
	2 h	-0.02 (-0.46 to 0.43)	-0.08	0.94	2.68 (0.42-4.94)	2.33	0.02*
PANSS general	Baseline	-0.19 (-1.11 to 0.73)	-0.41	0.68	0.60 (-4.04 to 5.25)	0.25	0.80
	2 h	0.48 (-0.44 to 1.40)	1.03	0.31	9.82 (5.35-14.28)	4.31	<0.001*
PANSS total	Baseline	-0.69 (-2.05 to 0.67)	-0.99	0.32	-2.10 (-7.94 to 7.94)	0.10	1.00
	2 h	0.55 (-0.82 to 1.91)	0.78	0.43	19.16 (11.40-26.92)	4.84	<0.001*

TP, Transiently psychotic; NP, non-psychotic; THC, Δ^9 -tetrahydrocannabinol; CI, confidence interval; STAI, State-Trait Anxiety Inventory; ARCI, Addiction Research Centre Inventory; AIS, Analogue Intoxication Scale; VAMS, Visual Analogue Mood Scale; PANSS, Positive and Negative Syndrome Scale.

^a Due to small sample size, multilevel model analyses were performed separately for THC and placebo. The only significant difference between the groups was seen in VAMS tranquillization ($p=0.03$) and all PANSS subscales: PANSS negative ($p\leq 0.02$) and the PANSS positive, general and total subscales (all $p\leq 0.001$).

* $p < 0.05$.

Task performance

We found a process-specific effect of THC on the main inhibitory measure of the task (commission/inhibition errors), but not on the executive process of the task (mean reaction time to 'go' trials). Across all participants THC increased inhibition errors at a trend-level of significance. Furthermore, there was a significant group \times drug interaction on this measure, where TPs made significantly more commission errors than NPs. This finding cannot be related to performance differences, as we modelled only the correct trials. The findings show, that the effect of THC on impairing go/no-go task performance is specific to the inhibitory process and that this effect is more pronounced in those who develop transient psychosis. Our participants seldom used cannabis, whilst previously both occasional and heavy users of cannabis have been shown to have increased reaction time with the stop signal task, which is considered to be indicative of poor impulse control to single doses of THC (Ramaekers *et al.* 2009). The finding of inhibition deficits in TPs is comparable with those

reported in people with schizophrenia and bipolar disorder during the go/no-go task (Kiehl *et al.* 2000; Fleck *et al.* 2011). Higher impulsivity, inability to suppress irrelevant acts and being unaware of making errors are likely to originate from a poorly coordinated response inhibition system and may be associated with the formation of some of the psychotic symptoms.

Neural effects of go/no-go task

Even though in our previous study (Borgwardt *et al.* 2008) relative to placebo, THC attenuated activation in the right inferior frontal gyrus and the ACG, here we found that the activation of the specific motor response inhibition network occurred only with a lenient threshold. However, consistent with the results of previous studies (Borgwardt *et al.* 2008; Bhattacharyya *et al.* 2010), we have again found that THC significantly increased activation in the right hippocampus, tail of the caudate and insula. While the latter two are key areas of inhibition, the hippocampus is not (Chambers *et al.* 2009). These findings suggest

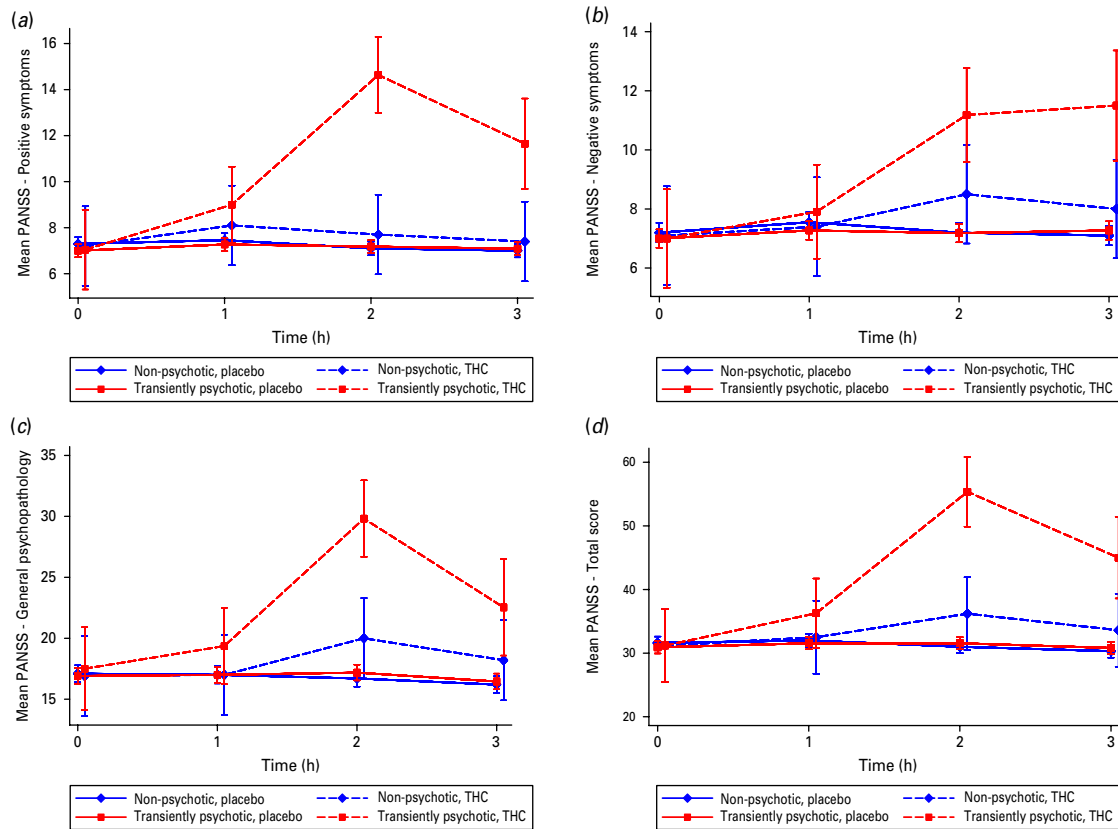


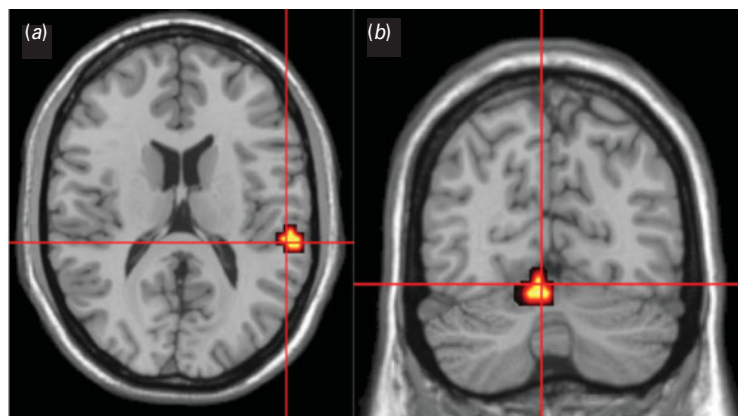
Fig. 2. Comparison of Positive and Negative Syndrome Scale (PANSS) subscales, between the transiently psychotic and non-psychotic groups under Δ^9 -tetrahydrocannabinol (THC) and placebo conditions: (a) positive symptoms; (b) negative symptoms; (c) general psychopathology; and (d) total score. Data are means, with standard errors represented by vertical bars. A comparison of transiently psychotic and non-psychotic participants 2 h after drug administration showed significant differences in the PANSS negative subscale ($p=0.02$) and a highly significant difference in all other subscales (all $p \leq 0.001$). Note that the y-axes have different scales in the graphs.

increased brain-processing effort during an inhibition task in a more widespread manner involving brain regions other than the specific response inhibition network, as has been reported previously in subjects who use cannabis on a regular basis (Tapert *et al.* 2007; Roberts & Garavan, 2010). Our findings extend those previous findings by showing that the up-regulation effect of these areas is already observed in people who use cannabis seldomly and further support the view that THC may be disrupting the neural mechanisms involved with this task. Alternative neuroanatomic recruitment such as involvement of the STG, MTG and cerebellum have also been reported in a number of studies carried out on patients with bipolar disorder and schizophrenia during response inhibition tasks (Fleck *et al.* 2011; Hughes *et al.* 2012).

Group effect

The two groups differed inherently in terms of their task-related activation in the right MTG and the

vermis of the cerebellum, independent of THC, which were reduced in the TPs. This is an interesting finding which implies a trait difference between the groups. As we excluded those with personal and family history of psychosis, it is unlikely that this finding reflects these factors. Additionally, the task we used does not normally involve the right MTG or the cerebellum. We can tentatively suggest that the differences we found may reflect a more general difference in participants' vulnerability to transient psychosis or to inhibitory dyscontrol and could be related to variations in single nucleotide polymorphisms that are associated with an increased risk of psychosis. However, our sample was not large enough to investigate this. Some recent studies focusing on early identification of psychosis have reported that the right MTG is implicated in at-risk or high-risk groups (Fusar-Poli *et al.* 2010; Meijer *et al.* 2011). Grey matter loss in the cerebellum amongst first-onset psychosis patients has also been shown in a recent meta-analysis (Fusar-Poli *et al.* 2011). Other supporting evidence for the involvement



Tal (x)	Tal (y)	Tal (z)	Side	Cerebral region
58	-22	15	Right	Right middle temporal gyrus
-7	-67	-24	-	Vermis of cerebellum

Fig. 3. Trait differences. Analysis of all subjects, independent of drug condition, showed significant differences between the two groups in two regions. (a) Crosshair showing that activation in the right middle temporal gyrus is attenuated in the transiently psychotic (TP) group in comparison with the non-psychotic (NP) group (TP < NP, $p < 0.007$, corrected for <1 false-positive cluster). (b) Crosshair showing that activation in the vermis of the cerebellum is attenuated in the TP group in comparison with the NP group (TP < NP, $p < 0.005$, corrected for <1 false-positive cluster). The left side of the brain is shown on the left side of the images. All coordinates in Talairach (Tal) space.

of this region to genetic vulnerability to psychosis is found in a recently reported study, when a significant three-way interaction between two susceptibility genes implicated in glutamate transmission (*G72* and *DAAO*) and the diagnosis of psychosis was detected at the right MTG (Mechelli *et al.* 2012).

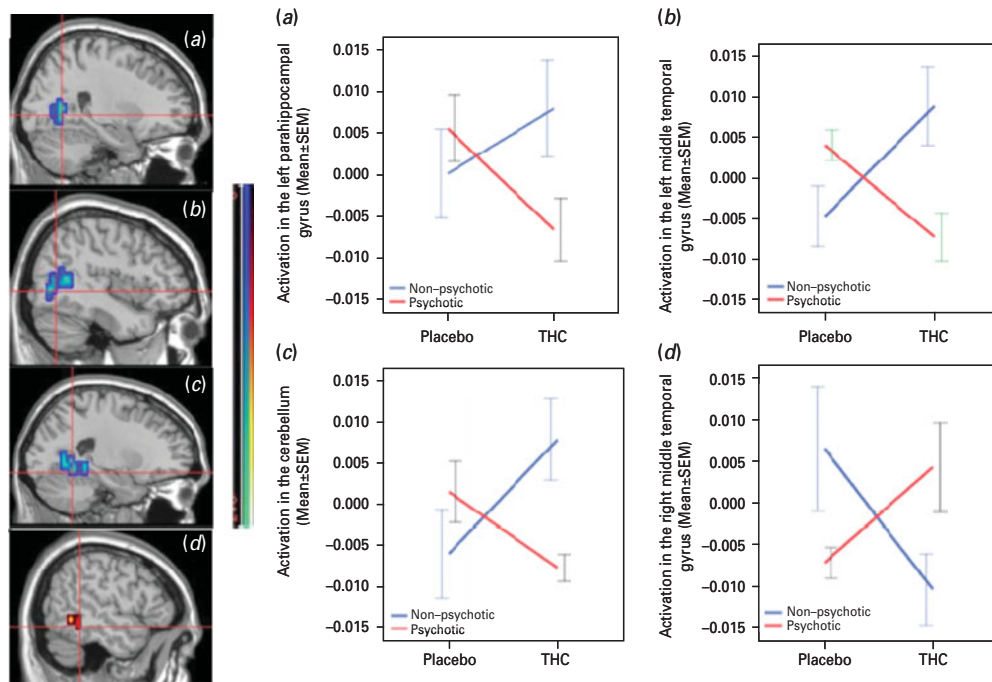
Differential neurophysiological processing of THC

Our other main finding was that, as hypothesized, THC had a different effect on brain function in participants who developed transient psychotic symptoms from those who did not. These effects were evident in the left PHG, an area that has been implicated in the pathophysiology of psychosis in post-mortem (McDonald *et al.* 2000), neuropsychological (Marvel *et al.* 2007), volumetric (Witthaus *et al.* 2009), functional (Wolf *et al.* 2007) and neurochemical (Stone *et al.* 2010) imaging studies. Effects in this region in relation to THC-induced psychosis are of particular interest because of the evidence that chronic cannabis use can impair memory (Battisti *et al.* 2010b). Our group had previously reported that THC increased parahippocampal activation bilaterally during an encoding task (Bhattacharyya *et al.* 2009) and attenuated it during an attentional salience task (Bhattacharyya *et al.* 2012b). Furthermore, structural and functional changes in the parahippocampal region are frequently identified in relation to cannabis use (Lorenzetti *et al.* 2010; Martín-Santos *et al.* 2010). The finding that attenuated left parahippocampal activity is observed only

in the TPs, but not in the NPs, provides further support that this region may be implicated in psychoses.

Additional differences were evident in the left middle/superior temporal cortices and in the cerebellum, areas that are implicated as key regions in schizophrenia (for reviews, see Honea *et al.* 2005; Smieskova *et al.* 2010; Jardri *et al.* 2011). The STG, as well as the cerebellum, has been implicated in inhibitory control (Rubia *et al.* 2007). The increased inhibition error rate in the TP group together with the increased activation in these two inhibition-related areas may suggest that the TP group had to work harder to maintain their inhibitory capacity, which was still below the level of that in the NP group. Conversely, THC increased activation in the right MTG in the TPs, whilst it attenuated it in the NPs. It is interesting that this area is differentially activated between the groups whether or not THC was present. It is difficult to interpret the two findings in relation to one another as they involve different analyses involving the same region.

In all of these regions, the effect of THC on activation in the group that experienced psychotic symptoms was in the opposite direction to that in the group that did not develop psychotic symptoms. The underlying processes for this dissociated effect will require further research and replication. Interestingly, a ketamine challenge study with healthy volunteers also reported a compelling consistency between the task, region, symptom associations and those reported in patients with schizophrenia (Honey *et al.* 2008).



Coordinates of regions where THC attenuated* activation in the TP group only					
Size	Tal (x)	Tal (y)	Tal (z)	Side	Cerebral region
10	-22	-59	-2	L	Parahippocampal/Fusiform gyri
21	-43	-59	-2	L	Middle temporal gyrus
28	32	-56	-13	R	Cerebellum/Fusiform gyrus
Coordinates of region where THC increased* activation in the TP group only					
12	51	-41	-13	R	Middle temporal gyrus

Fig. 4. Interaction between the transiently psychotic (TP) and non-psychotic (NP) groups and drug conditions [Δ^9 -tetrahydrocannabinol (THC) versus placebo]. Plots (a), (b) and (c) show that the administration of THC attenuated activation in the left parahippocampal gyrus/fusiform gyrus (a crosshair), left middle temporal gyrus/superior temporal sulcus (b crosshair) and right cerebellum/fusiform gyrus (c crosshair) in the TP group, whilst it increased activation in the same region in the NP group ($p=0.01$). Plot (d) shows that THC modulated activation by increasing it in the right middle temporal gyrus (d crosshair) in the TP group, whilst it attenuated it in the NP group ($p=0.01$). Data are means indexed by the mean sum of squares ratio, with standard errors represented by vertical bars. The left side of the brain is shown on the left side of the images. All coordinates in Talariach (Tal) space. * In the NP group THC did the reverse activity in these regions.

To our knowledge, the present study is the first to demonstrate neurobiological differences that may contribute to the differential sensitivity to the psychotogenic effects of cannabis in healthy participants. Our findings imply that there is an association between individual variability in brain response and subsequent transitory psychotic symptom formation. Even though THC only transiently produced psychotic symptoms in some, the brain regions that were up-regulated are also those critically implicated in schizophrenia. Whilst acknowledging that transient psychosis is not the same as a full-blown psychosis, there may be varying degrees of risk in response to the psychotogenic effects of THC. How THC modulates specific brain regions can also provide information on symptom formation. Given the size of the problem

universally, similar studies with larger samples are required to understand the basis of differential neural responses to THC to inform the ongoing public health debate about the risks of cannabis use, as well as leading to the development of interventions designed to reduce its use, particularly targeting those most at risk.

Limitations

This study has a modest sample size. Studies of this type are logistically difficult when participants, who seldom use cannabis, are asked to attend more than one study session. However, we have used non-parametric, repeated-measures analyses to obtain more robust findings in order to compensate for the low numbers (Brammer et al. 1997; Bullmore et al. 1999).

The use of PANSS is another limitation, as this scale is not designed for transient psychosis, even though our participants experienced frank hallucinations and delusions temporarily.

Supplementary material

For supplementary material accompanying this paper visit <http://dx.doi.org/10.1017/S0033291712001924>.

Acknowledgements

The present study was supported by a Joint Medical Research Council/Priority clinical research training fellowship to S.B. and support from the Psychiatry Research Trust, UK. We are grateful to Glynis Ivin (Department of Pharmacology, the Maudsley Hospital), for the storing, blinding procedure and dispensing of the THC and placebo.

Declaration of Interest

None.

References

- Arseneault L, Cannon M, Murray R, Poulton R, Caspi A, Moffitt TE (2002). Cannabis use in adolescence and risk for adult psychosis: longitudinal prospective study. *British Medical Journal* **325**, 1212–1213.
- Battisti RA, Roodenrys S, Johnstone SJ, Pesa N, Hermens DF, Solowij N (2010a). Chronic cannabis users show altered neurophysiological functioning on Stroop task conflict resolution. *Psychopharmacology* **212**, 613–624.
- Battisti RA, Roodenrys S, Johnstone SJ, Respondek C, Hermens DF, Solowij N (2010b). Chronic use of cannabis and poor neural efficiency in verbal memory ability. *Psychopharmacology* **209**, 319–330.
- Bhattacharyya S, Atakan Z, Martín-Santos R, Crippa JA, Kambeitz J, Prata D, Williams S, Brammer M, Collier DA, McGuire PK (2012a). Preliminary report of biological basis of sensitivity to the effects of cannabis on psychosis: AKT1 and DAT1 genotype modulates the effects of Δ -9-tetrahydrocannabinol on midbrain and striatal function. *Molecular Psychiatry*. Published online 31 January 2012. doi:10.1038/mp.2011.
- Bhattacharyya S, Crippa JA, Allen P, Martín-Santos R, Borgwardt S, Fusar-Poli P, Rubia K, Kambeitz J, O'Carroll C, Seal ML, Giampietro V, Brammer M, Zuardi AW, Atakan Z, McGuire PK (2012b). Induction of psychosis by Δ -9-tetrahydrocannabinol reflects modulation of prefrontal and striatal function during attentional salience processing. *Archives of General Psychiatry* **69**, 27–36.
- Bhattacharyya S, Fusar-Poli P, Borgwardt S, Martín-Santos R, Nosarti C, O'Carroll C, Allen P, Seal ML, Fletcher PC, Crippa JA, Giampietro V, Mechelli A, Atakan Z, McGuire P (2009). Modulation of mediotemporal and ventrostriatal function in humans by Δ -9-tetrahydrocannabinol: a neural basis for the effects of *Cannabis sativa* on learning and psychosis. *Archives of General Psychiatry* **66**, 442–451.
- Bhattacharyya S, Morrison PD, Fusar-Poli P, Martín-Santos R, Borgwardt S, Winton-Brown T, Nosarti C, O'Carroll CM, Seal M, Allen P, Mehta MA, Stone JM, Tunstall N, Giampietro V, Kapur S, Murray RM, Zuardi AW, Crippa JA, Atakan Z, McGuire P (2010). Opposite effects of Δ -9-tetrahydrocannabinol and cannabidiol on human brain function and psychopathology. *Neuropsychopharmacology* **35**, 764–774.
- Borgwardt SJ, Allen P, Bhattacharyya S, Fusar-Poli P, Crippa JA, Seal ML, Fraccaro V, Atakan Z, Martín-Santos R, O'Carroll C, Rubia K, McGuire PK (2008). Neural basis of Δ -9-tetrahydrocannabinol and cannabidiol: effects during response inhibition. *Biological Psychiatry* **64**, 966–973.
- Brammer MJ, Bullmore ET, Simmons A, Williams SCR, Grasby PM, Howard RJ, Woodruff PWR, Rabe-Hesketh S (1997). Generic brain activation mapping in fMRI: a non-parametric approach. *Magnetic Resonance Imaging* **15**, 763–770.
- Bullmore ET, Suckling J, Overmeyer S, Rabe-Hesketh S, Taylor E, Brammer MJ (1999). Global, voxel and cluster tests, by theory and permutation, for a difference between two groups of structural MR images of the brain. *IEEE Transactions on Medical Imaging* **18**, 32–42.
- Cascini F, Aiello C, Di Tanna G (2011). Increasing delta-9-tetrahydrocannabinol (Δ -9-THC) content in herbal cannabis over time: systematic review and meta-analysis. *Current Drug Abuse Reviews* **5**, 32–40.
- Caspi A, Moffitt TE, Cannon M, McClay J, Murray R, Harrington H, Taylor A, Arseneault L, Williams B, Braithwaite A, Poulton R, Craig IW (2005). Moderation of the effect of adolescent-onset cannabis use on adult psychosis by a functional polymorphism in the catechol-O-methyltransferase gene: longitudinal evidence of a gene \times environment interaction. *Biological Psychiatry* **57**, 1117–1127.
- Chambers CD, Garavan, Bellgrove MA (2009). Insights into the neural basis of response inhibition from cognitive and clinical neuroscience. *Neuroscience and Biobehavioural Reviews* **33**, 631–646.
- Chesher GB, Bird KD, Jackson DM, Perrignon A, Starmer GA (1990). The effects of orally administered delta-9-tetrahydrocannabinol in man on mood and performance measures: a dose–response study. *Pharmacology, Biochemistry and Behavior* **35**, 861–864.
- Curran HV, Brignell C, Fletcher S, Middleton P, Henry J (2002). Cognitive subjective dose–response effects of acute oral Δ -9-tetrahydrocannabinol (THC) in infrequent cannabis users. *Psychopharmacology* **164**, 61–70.
- Degenhardt L, Coffey C, Carlin JB, Swift W, Moore E, Patton GC (2010). Outcomes of occasional cannabis use in adolescence: 10-year follow-up study in Victoria, Australia. *British Journal of Psychiatry* **196**, 290–295.

- D'Souza DC, Perry E, MacDougall L, Ammerman Y, Cooper TB, Wu YT, Braley G, Gueorguieva R, Krystal JH** (2004). The psychotomimetic effects of intravenous delta-9-tetrahydrocannabinol in healthy individuals: implications for psychosis. *Neuropsychopharmacology* **29**, 1558–1572.
- D'Souza DC, Sewell RA, Ranganathan M** (2009). Cannabis and psychosis/schizophrenia: human studies. *European Archives of Clinical Neurosciences* **259**, 413–431.
- Enticott PG, Ogloff JR, Bradshaw JL** (2008). Response inhibition and impulsivity in schizophrenia. *Psychiatry Research* **157**, 251–254.
- Fleck DE, Kotwal R, Eliassen JC, Lamy M, DelBello MP, Adler CM, Durling M, Cerullo MA, Strakowski SM** (2011). Preliminary evidence for increased frontosubcortical activation on a motor impulsivity task in mixed episode bipolar disorder. *Journal of Affective Disorders* **133**, 333–339.
- Fusar-Poli P, Broome MR, Matthiasson P, Woolley JB, Johns LC, Tabraham P, Bramon E, Valmaggia L, Williams SC, McGuire P** (2010). Spatial working memory in individuals at high risk for psychosis: longitudinal fMRI study. *Schizophrenia Research* **123**, 45–52.
- Fusar-Poli P, Crippa JA, Bhattacharyya S, Borgwardt SJ, Allen P, Martín-Santos R, Seal M, Surguladze SA, O'Carroll C, Atakan Z, Zuardi AW, McGuire PK** (2009). Distinct effects of Δ^9 -tetrahydrocannabinol and cannabidiol on neural activation during emotional processing. *Archives of General Psychiatry* **66**, 95–105.
- Fusar-Poli P, Radua J, McGuire P, Borgwardt S** (2011). Neuroanatomical maps of psychosis onset: voxel-wise meta-analysis of antipsychotic-naïve VBM studies. *Schizophrenia Bulletin*. Published online 17 November 2011. doi:10.1093/schbul/sbr134.
- Gray KM, Hart CL, Christie DK, Upadhyaya HP** (2008). Tolerability and effects of oral Δ^9 -tetrahydrocannabinol in older adolescents with marijuana use disorders. *Pharmacology, Biochemistry and Behavior* **91**, 67–70.
- Green B, Kavanagh D, Young R** (2003). Being stoned: a review of self-reported cannabis effects. *Drug and Alcohol Review* **22**, 453–460.
- Grotenhermen F** (2003). Pharmacokinetics and pharmacodynamics of cannabinoids. *Clinical Pharmacokinetics* **42**, 327–360.
- Gruber SA, Yurgelun-Todd DA** (2005). Neuroimaging of marijuana smokers during inhibitory processing: a pilot investigation. *Brain Research. Cognitive Brain Research* **23**, 107–118.
- Hayasaka S, Nichols TE** (2003). Validating cluster size inference: random field and permutation methods. *Neuroimage* **20**, 2343–2356.
- Henquet C, Krabbendam L, Spauwen J, Kaplan C, Lieb R, Wittchen HU, van Os J** (2004). Prospective cohort study of cannabis use, predisposition for psychosis, and psychotic symptoms in young people. *British Medical Journal* **330**, 11–14.
- Hester R, Nestor L, Garavan H** (2009). Impaired error awareness and anterior cingulate cortex hypoactivity in chronic cannabis users. *Neuropsychopharmacology* **4**, 2450–2458.
- Honea R, Crow TJ, Passingham D, Mackay CE** (2005). Regional deficits in brain volume in schizophrenia: a meta-analysis of voxel-based morphometry studies. *American Journal of Psychiatry* **162**, 2233–2245.
- Honey GD, Corlett PR, Absolam AR, Lee M, Pomarol-Clotet E, Murray GK, McKenna PJ, Bullmore ET, Menon DK, Fletcher PC** (2008). Individual differences in psychotic effects of ketamine are predicted by brain function measure under placebo. *Journal of Neuroscience* **28**, 6295–7303.
- Huddy VC, Aron AR, Harrison M, Barnes TR, Robbins TW, Joyce EM** (2009). Impaired conscious and preserved unconscious inhibitory processing in recent onset schizophrenia. *Psychological Medicine* **39**, 907–916.
- Hughes ME, Fulham WR, Johnston PK, Michie PT** (2012). Stop-signal response inhibition in schizophrenia: behavioural, event-related potential and functional neuroimaging data. *Biological Psychiatry* **89**, 220–231.
- Jardri R, Pouchet A, Pins D, Thomas P** (2011). Cortical activations during auditory verbal hallucinations in schizophrenia: a coordinate-based meta-analysis. *American Journal of Psychiatry* **168**, 73–81.
- Kay SR, Fiszbein A, Opler LA** (1987). The Positive and Negative Syndrome Scale (PANSS) for schizophrenia. *Schizophrenia Bulletin* **13**, 261–276.
- Kiehl KA, Smith AM, Hare RD, Liddle PF** (2000). An event-related potential investigation of response inhibition in schizophrenia and psychopathy. *Biological Psychiatry* **48**, 210–221.
- Lemberger L, Axelrod J, Kopin IJ** (1971). Metabolism disposition of Δ^9 -tetrahydrocannabinol in man. *Pharmacological Review* **23**, 371–380.
- Lorenzetti V, Lubman DI, Whittle S, Solowij N, Yucel M** (2010). Structural MRI findings in long-term cannabis users: what do we know? *Substance Use and Misuse* **45**, 1787–1808.
- Martín-Santos R, Fagundo AB, Crippa JA, Atakan Z, Bhattacharyya S, Allen P, Fusar-Poli P, Borgwardt S, Seal M, Busatto GF, McGuire P** (2010). Neuroimaging in cannabis use: a systematic review of the literature. *Psychological Medicine* **40**, 383–398.
- Marvel CL, Turner BM, O'Leary DS, Johnson HJ, Pierson RK, Pnato LL, Andreasen NC** (2007). The neural correlates of implicit sequence learning in schizophrenia. *Neuropsychology* **21**, 761–777.
- McDonald B, Highley JR, Walker MA, Herron BM, Cooper SJ, Esiri MM, Crow TJ** (2000). Anomalous asymmetry of fusiform and parahippocampal gyrus gray matter in schizophrenia: a postmortem study. *American Journal of Psychiatry* **157**, 40–47.
- McGuire PK, Jones P, Harvey I, Williams M, McGuffin P, Murray RM** (1995). Morbid risk of schizophrenia for relatives of patients with cannabis-associated psychosis. *Schizophrenia Research* **15**, 277–281.
- Mechelli A, Fusar-Poli P, Papagni SA, Tognin S, Kambeitz J, Fu C, Picchioni M, Walshe M, Touloupoulou T, Bramon E, Murray R, McGuire P** (2012). Genetic vulnerability to psychosis and cortical function: epistatic effects between DAAO and G72. *Current Pharmacological Design* **18**, 510–517.

- Meijer JH, Schmitz N, Nieman DH, Becker HE, van Amelsvoort TA, Dingemans PM, Linszen DH, de Haan L (2011). Semantic fluency deficits and reduced grey matter before transition to psychosis: a voxelwise correlational analysis. *Psychiatry Research* **194**, 1–6.
- Moore THM, Zammit S, Lingford-Hughes A, Barnes TRE, Jones PB, Burke M, Lewis G (2007). Cannabis use and risk of psychotic or affective mental health outcomes: a systematic review. *Lancet* **370**, 319–328.
- Morrison PD, Zois V, McKeown DA, Lee TD, Holt DW, Powell JF, Kapur S, Murray RM (2009). The acute effects of synthetic intravenous Δ^9 -tetrahydrocannabinol on psychosis, mood and cognitive functioning. *Psychological Medicine* **39**, 1607–1616.
- Ohlsson A, Lindgren JE, Wahlen A, Agurell S, Hollister LE, Gillespie HK (1980). Plasma delta-9 tetrahydrocannabinol concentrations clinical effects after oral intravenous administration smoking. *Clinical Pharmacology and Therapeutics* **28**, 409–416.
- Peters BD, de Koning P, Dingemans P, Becker H, Linszen DH, de Haan L (2009). Subjective effects of cannabis before the first psychotic episode. *Australian and New Zealand Journal of Psychiatry* **43**, 1155–1162.
- Rabe-Hesketh S, Bullmore ET, Brammer MJ (1997). The analysis of functional magnetic resonance images. *Statistical Methods in Medical Research* **6**, 215–237.
- Ramaekers JG, Kauert G, Theunissen EL, Toennes SW, Moeller MR (2009). Neurocognitive performance during acute THC intoxication in heavy and occasional cannabis users. *Journal of Psychopharmacology* **23**, 266–277.
- Roberts GM, Garavan H (2010). Evidence of increased activation underlying cognitive control in ecstasy and cannabis users. *Neuroimage* **15**, 429–435.
- Rubia K, Russell T, Bullmore ET, Soni W, Brammer MJ, Simmons A, Taylor E, Andrew C, Giampietro V, Sharma T (2001a). An fMRI study of reduced left prefrontal activation in schizophrenia during normal inhibitory function. *Schizophrenia Research* **52**, 47–55.
- Rubia K, Russell T, Overmeyer S, Brammer MJ, Bullmore ET, Sharma T, Simmons A, William SC, Giampietro V, Andrew CM, Taylor E (2001b). Mapping motor inhibition: conjunctive brain activations across different versions of go/no-go and stop tasks. *Neuroimage* **13**, 250–261.
- Rubia K, Smith AB, Brammer MJ, Taylor E (2007). Temporal lobe dysfunction in medication-naïve boys with attention-deficit/hyperactivity disorder during attention allocation and its relation to response variability. *Biological Psychiatry* **62**, 999–1006.
- Simmonds DJ, Pekar JJ, Mostofsky SH (2008). Meta-analysis of go/no-go tasks demonstrating that fMRI activation associated with response inhibition task is task-dependent. *Neuropsychologia* **46**, 224–232.
- Smieskova R, Fusar-Poli P, Allen P, Bendfeldt K, Stieglitz RD, Drewe J, Radue EW, McGuire PK, Riecher-Rössler A, Borgwardt SJ (2010). Neuroimaging predictors of transition to psychosis – a systematic review and meta-analysis. *Neuroscience and Biobehavioral Reviews* **34**, 1207–1222.
- Stirling J, Barkus EJ, Nabosi L, Irshad S, Roemer G, Schreudergoidheijt B, Lewis S (2008). Cannabis-induced psychotic-like experiences are predicted by high schizotypy. *Confirmation of preliminary results in a large cohort. Psychopathology* **41**, 371–378.
- Stone JM, Howes OD, Egerton A, Kambeitz J, Allen P, Lythgoe DJ, O’Gorman RL, McLean MA, Barker GJ, McGuire P (2010). Altered relationship between hippocampal glutamate levels and striatal dopamine function in subjects at ultra high risk of psychosis. *Biological Psychiatry* **68**, 599–602.
- Tapert SF, Schweinsburg AD, Drummond SPA, Paulus MP, Brown SA, Yang TT, Frank LR (2007). Functional MRI of inhibitory processing in abstinent adolescent marijuana users. *Psychopharmacology* **194**, 173–183.
- Thirion B, Pinel P, Tucholka A, Roche A, Ciuciu P, Mangin JF, Poline JB (2007). Structural analysis of fMRI data revisited: improving the sensitivity and reliability of fMRI group studies. *IEEE Transactions on Medical Imaging* **26**, 1256–1269.
- Thomas H (1996). A community survey of adverse effects of cannabis use. *Drug and Alcohol Dependence* **42**, 201–207.
- Turken AU, Vuilleumier P, Mathalon DH, Swick D, Ford JM (2003). Are impairments of action monitoring and executive control true dissociative dysfunctions in patients with schizophrenia? *American Journal of Psychiatry* **160**, 1881–1883.
- van Winkel R; Genetic Risk and Outcome of Psychosis (GROUP) Investigators (2011). Family-based analysis of genetic variation underlying psychosis-inducing effects of cannabis: sibling analysis and proband follow-up. *Archives of General Psychiatry* **68**, 148–157.
- Winton-Brown TT, Allen P, Bhattacharyya S, Borgwardt SJ, Fusar-Poli P, Crippa JA, Seal M, Martín-Santos R, Ffytche D, Zuardi AW, Atakan Z, McGuire PK (2011). Modulation of auditory and visual processing by delta-9-tetrahydrocannabinol and cannabidiol: an fMRI study. *Neuropsychopharmacology* **36**, 1340–1348.
- Witthaus H, Kaufmann C, Bohner G, Ozgurdal S, Gudlowski Y, Gallinat J, Ruhrmann S, Brune M, Heinz A, Klingebiel R, Juckel G (2009). Gray matter abnormalities in subjects at ultra-high risk for schizophrenia and first-episode schizophrenic patients compared to healthy controls. *Psychiatry Research* **173**, 163–169.
- Wolf DH, Gur RC, Valdez JN, Loughhead J, Elliott MA, Gur R, Ragland JD (2007). Alterations of fronto-temporal connectivity during word encoding in schizophrenia. *Psychiatry Research* **154**, 221–232.
- Zammit S, Allebeck P, Andreasson S, Lundberg I, Lewis G (2002). Self reported cannabis use as a risk factor for schizophrenia in Swedish conscripts of 1969: historical cohort study. *British Medical Journal* **325**, 1199–1201.